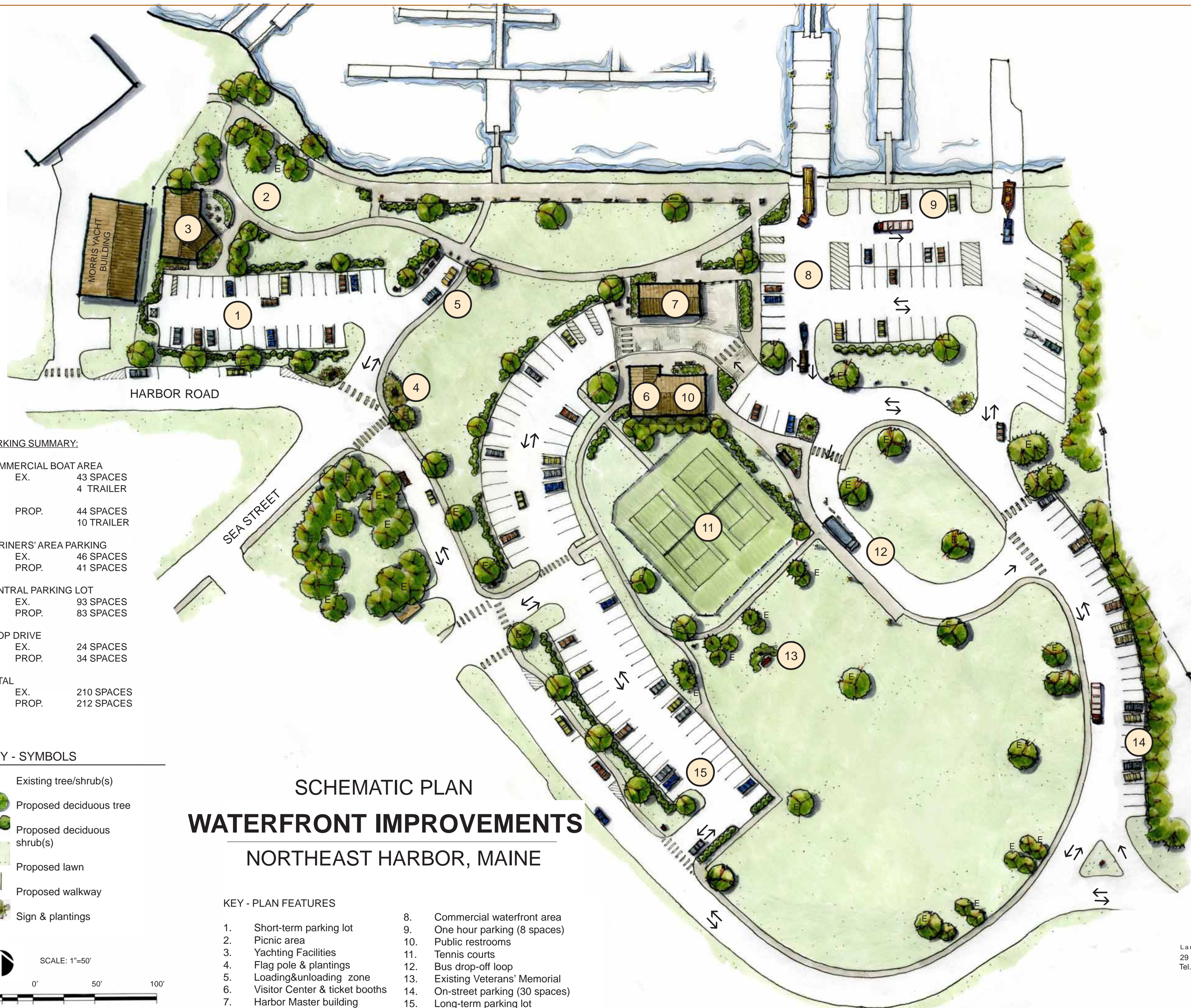


SCHEMATIC PLAN



PARKING SUMMARY:

COMMERCIAL BOAT AREA	
EX.	43 SPACES 4 TRAILER
PROP.	44 SPACES 10 TRAILER
MARINERS' AREA PARKING	
EX.	46 SPACES
PROP.	41 SPACES
CENTRAL PARKING LOT	
EX.	93 SPACES
PROP.	83 SPACES
LOOP DRIVE	
EX.	24 SPACES
PROP.	34 SPACES
TOTAL	
EX.	210 SPACES
PROP.	212 SPACES

KEY - SYMBOLS

- E Existing tree/shrub(s)
- Proposed deciduous tree
- Proposed deciduous shrub(s)
- Proposed lawn
- Proposed walkway
- Sign & plantings

SCHEMATIC PLAN WATERFRONT IMPROVEMENTS NORTHEAST HARBOR, MAINE

KEY - PLAN FEATURES

- | | |
|-----------------------------------|-----------------------------------|
| 1. Short-term parking lot | 8. Commercial waterfront area |
| 2. Picnic area | 9. One hour parking (8 spaces) |
| 3. Yachting Facilities | 10. Public restrooms |
| 4. Flag pole & plantings | 11. Tennis courts |
| 5. Loading/unloading zone | 12. Bus drop-off loop |
| 6. Visitor Center & ticket booths | 13. Existing Veterans' Memorial |
| 7. Harbor Master building | 14. On-street parking (30 spaces) |
| | 15. Long-term parking lot |

Project Team:

CES, INC.

9 Apple Lane
Southwest Harbor, ME 04679
Tel. (207) 244-0062
www.ces-maine.com

Alan Holt
Community Design Studio

145 Newbury Street
Portland, Maine 04101
Tel. (207) 761-4232
alan@communitydesignstudio.com

Regina S. Leonard

Landscape Architecture & Design
29 Bridge Street, Topsham, ME 04086
Tel. 207.450.9700 rslsdesign@juno.com

Date: August 5, 2009
Revised Aug. 12, 2009
Revised Aug. 18, 2009

